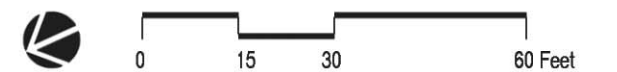
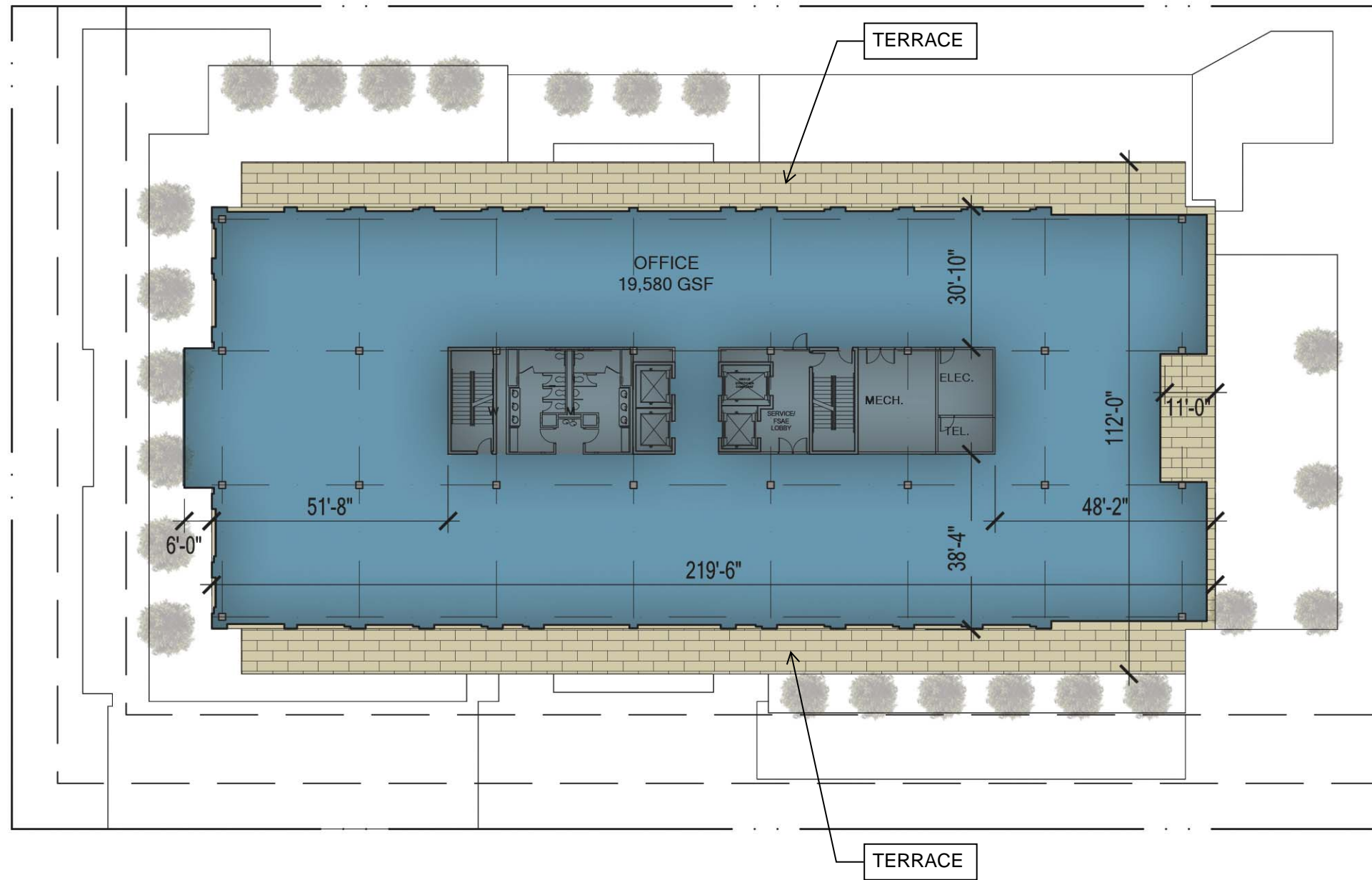


TOTAL LEVEL 2 TERRACE  
AREA: 4,665 SF



LEVEL 12 CONCEPTUAL PLAN

Weir's Plaza  
Dallas, Texas

Job #: 17139.00  
File Name: Weir's Plaza11x17 Plans.psd  
Date: 11/01/17  
Drawn by: DTF, TDB, RR, AM



2808 Fairmount Street, Suite 300  
Dallas, Texas 75201 | 214.303.1500

3300 West 7th Street, Suite 110  
Fort Worth, Texas 76107 | 817.303.1500