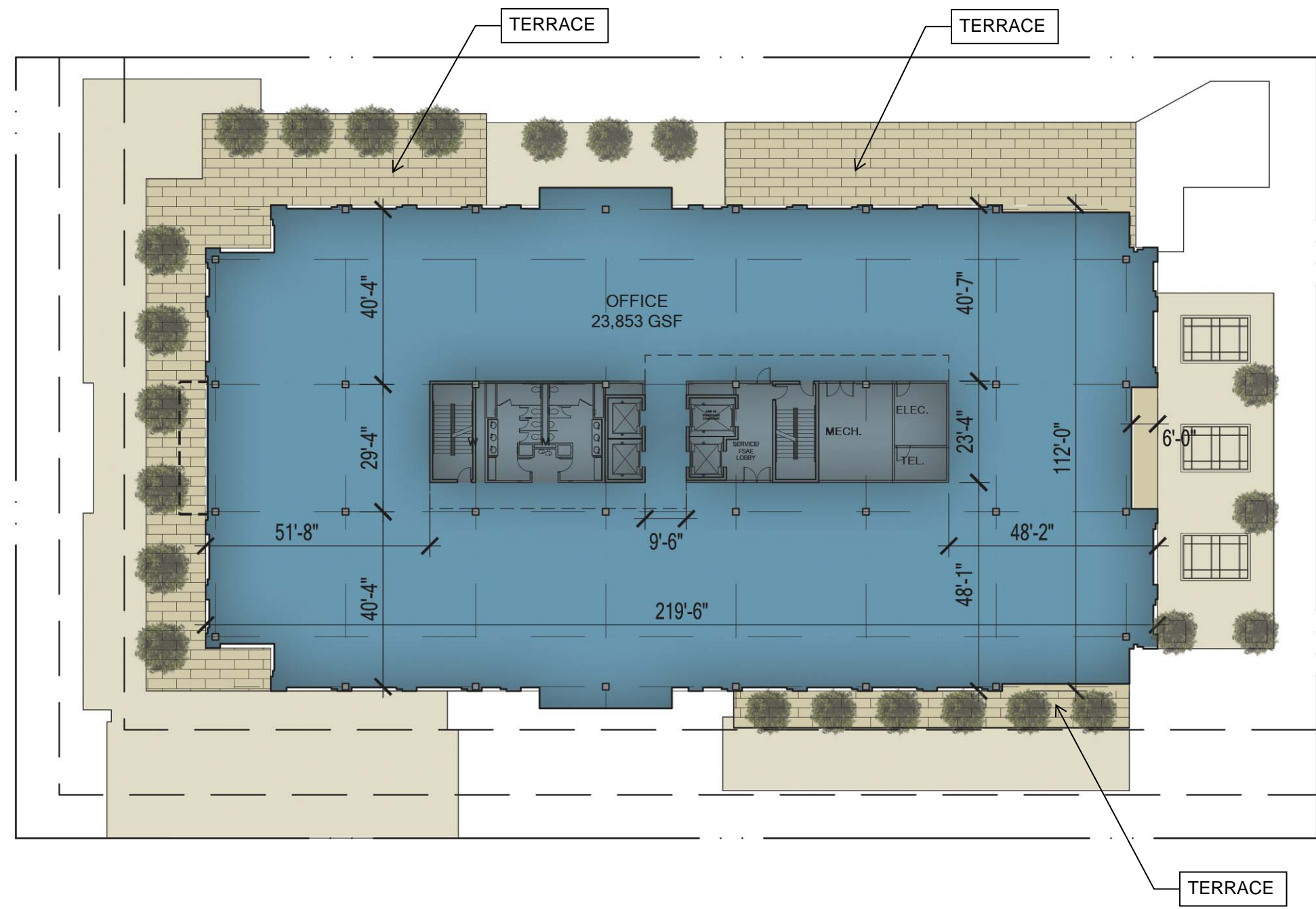


TOTAL LEVEL 2 TERRACE
AREA: 5,785 SF



LEVEL 3 CONCEPTUAL PLAN

Weir's Plaza
Dallas, Texas

Job #: 17139.00
File Name: Weir's Plaza11x17 Plans.psd
Date: 11/01/17
Drawn by: DTF, TDB, RR, AM



2808 Fairmount Street, Suite 300
Dallas, Texas 75201 | 214.303.1500

3300 West 7th Street, Suite 110
Fort Worth, Texas 76107 | 817.303.1500